



# GMT MONTHLY MEMBERSHIP PROGRESS REPORT

Results as of: 6/30/2018

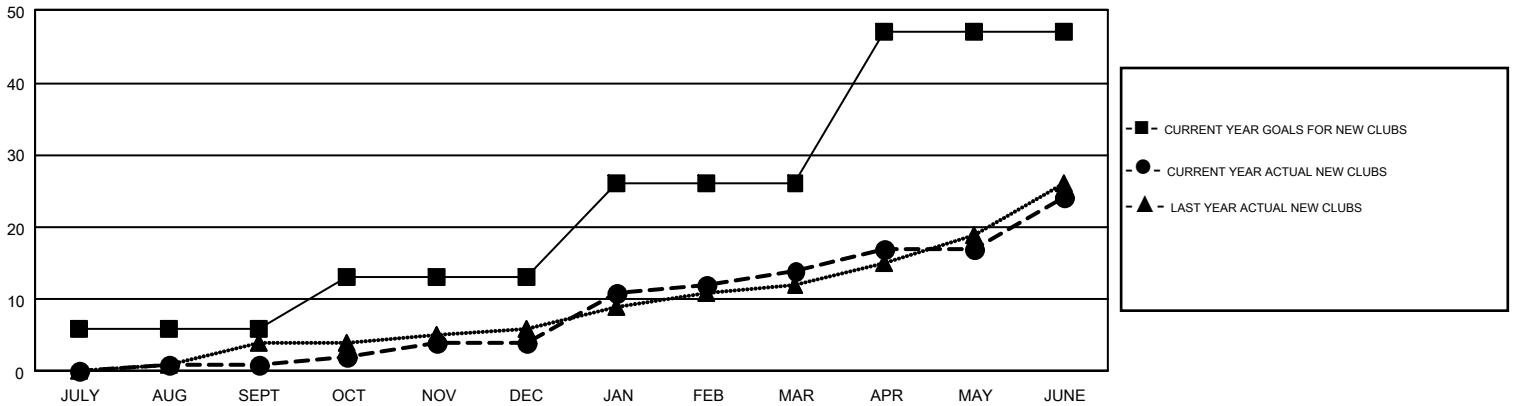
## GMT Constitutional Area 1, Group A

GMT: MAHESH CHITNIS

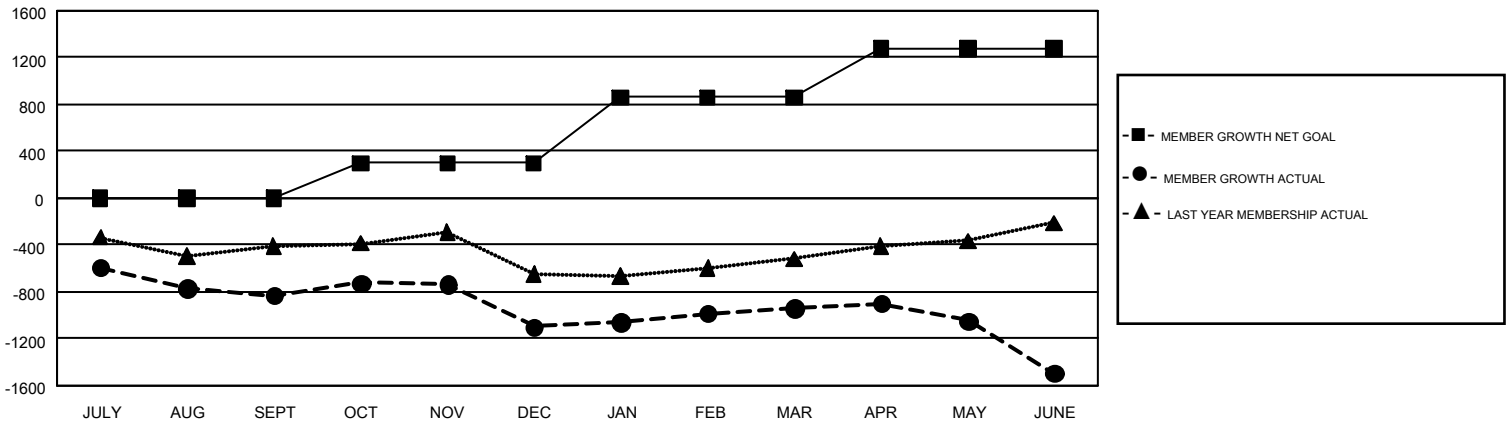
REPORT DOES NOT INCLUDE CLUBS IN UNDISTRICTED AREAS.

Clubs				Members			
RESULTS FOR 2017-2018				RESULTS FOR 2017-2018			
QUARTER	NEW CLUB GOAL	NEW CLUBS	DROPPED CLUBS	QUARTER	MEMBER GROWTH NET GOAL	MEMBER GROWTH ACTUAL	DROPPED MEMBERS ACTUAL (including transfers)
JULY/AUG/SEPT	6	1	5	JULY/AUG/SEPT	-5	727	1,411
OCT/NOV/DEC	7	3	10	OCT/NOV/DEC	302	1,135	1,329
JAN/FEB/MAR	13	10	5	JAN/FEB/MAR	565	1,284	1,045
APR/MAY/JUNE	21	10	12	APR/MAY/JUNE	417	1,980	2,420

GOALS AND ACTUAL NEW CLUBS CUMULATIVE



GOALS AND ACTUAL MEMBERS CUMULATIVE



DROPPED CLUBS: 32	1,029 CLUBS OF 1,561 ADDED 1 OR MORE NEW MEMBERS	<b>GENDER DISTRIBUTION</b> MALE                    29,001 (65.21%) FEMALE                 15,469 (34.79%)
<b>DROPPED MEMBERS</b> DECEASED                 688 CLUB CANCELLED         261 OTHER                        5,253 <hr/> TOTAL                        6,202	<a href="#">CLICK HERE FOR CUMULATIVE MEMBERSHIP DATA</a>	TOTAL FAMILY UNIT MEMBERS                    0 FAMILY MEMBERS PAYING HALF DUES                    0